

# 12 TON TRUCK MOUNTED CRANE · DONGFENG ·



DONGFENG  
SPECIFIC

CODE JNJQSCD12A

**Cooperation**

**Win-Win**

**Innovation**

**Development**

**More models**

JNJQSCD12A

## Product details

---



Cab

Multi-function steering wheel, original PTO, air conditioning + electric doors and windows + central locking, electric heated rearview mirrors.

Air brake, cruise control, complete interiors.



Lifting Boom

By wireless over-hoisting prevention device, it can prevent damage and breakdown of wire and real



Operation Station

Optimally & ergonomically designed top seat console guarantees all day comfort to operator



Outrigger

180° slewing type of main jack outriggers help protect against damage during the drive.

# JQCM

OPERATION  
CONTROL STATION

360° ROTARY CRANE

HYDRAULIC TELESCOPIC STRAIGHT BOOM

12 TON DONGFENG  
CHASSIS

UNILATERAL 2M X 1SECTION OUTRIGGER

TRUCK BED

THICKENED WEAR-RESISTANT TIRES

**12TON**

FRONT

LEFT

RIGHT

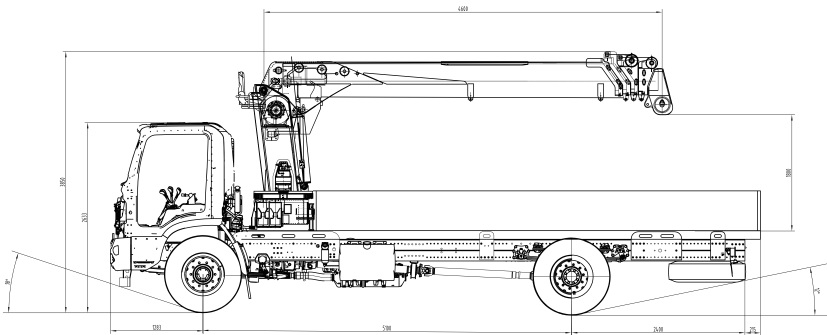
BACK



## TECHNICAL DATA

### MAIN PARAMETERS

*12 Ton Dongfeng Hydraulic Truck Mounted Crane*	
Overall dimensions	12000*2500*3950mm
Truck bed dimensions	8500*2400*550mm
Wheelbase	5100+1350mm
Max. weight (full load)	25000kg
Truck mounted crane weight	16230kg
Rated truck loading capacity	8575kg
Machine width span	2.5m*5.8m



### CHASSIS

Chassis model	Dongfeng Huashen F5
Gearbox model	Fast 8-speed transmission
Engine Brand	Yuchai
Engine power	270hp/199kw
Axle load	7000kg/18000kg
Max. speed	90km/h
Cooling system	Air conditioner
Tyre	1100R20-18PR
Dual-pump confluence	Aluminum hydraulic oil tank
Chassis frame thickness	284mm (3-layers)

### LIFTING & SLEWING SYSTEM

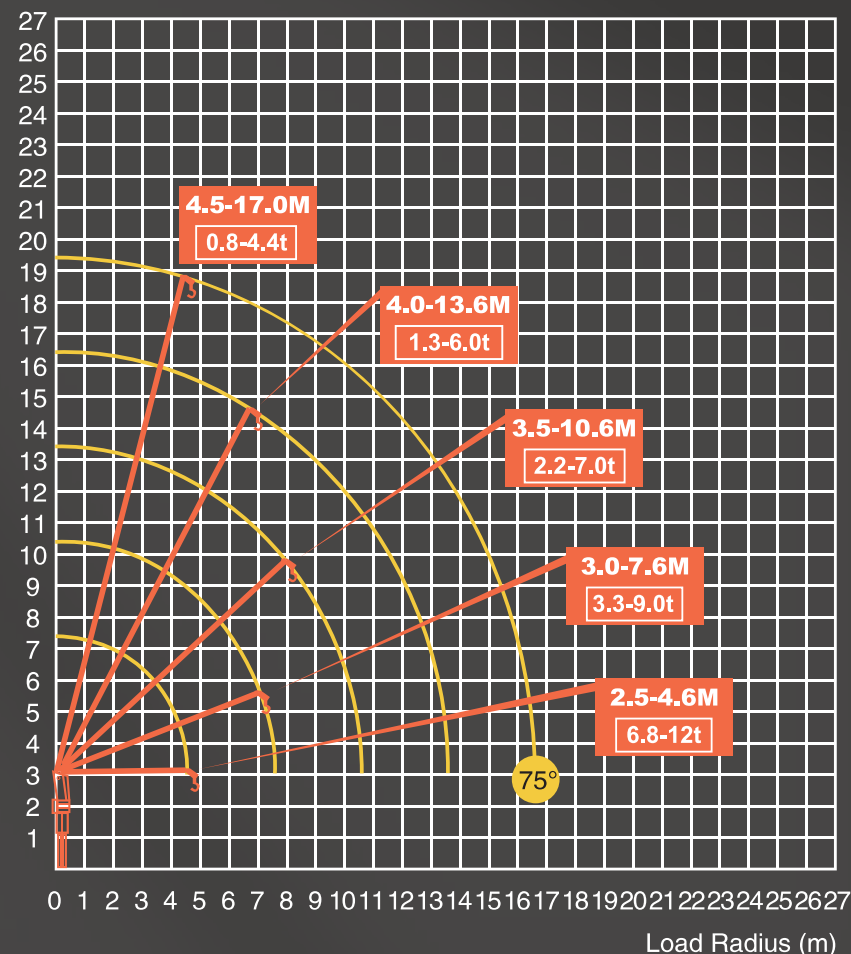
Max. lifting weight	12000kg
Max. lifting height	21.8m
Max. elevation angle	0-75°
Boom	5m x 5 sections (U-shape, 5.6-18.8m)
Max. lifting torque	30000kg*m
Hydraulic outrigger	Automatic (2-section)
Boom extension	Return rope
Boom extension method	By double cylinders
Slewing angle	360°
Slewing speed	2.5r/min



# RATED LIFTING CAPACITY & WORKING RANGE

RATED LIFTING CAPACITY (Unit: ton) Working radius (m)	RATED LIFTING CAPACITY WEIGHT				
	1 Boom	2 Boom	3 Boom	4 Boom	5 Boom
2.5	*12				
3.0	*10	*9.0			
3.5	*9.0	7.3	7.0		
4.0	8.0	7.0	6.4	6.0	
4.5	6.8 ( 4.6 )	6.4	6.0	5.4	4.4
5.0		5.6	5.2	5.0	3.7
6.0		5.2	4.4	4.0	3.2
7.0		4.0	3.5	3.2	2.9
8.0		3.3 ( 7.6 )	3.0	3.0	2.6
9.0			2.8	2.8	2.2
10.0			2.2 ( 10.6 )	2.0	2.8
12.0				1.7	1.5
14.0				1.3 ( 13.6 )	1.3
16.0					1.1
17.0					0.8 ( 16.6 )
Factor	(*) is a factor of 6 ; the rest is a factor of 4.				
<b>Notes:</b> <ol style="list-style-type: none"> <li>1. The rated lifting capacity includes the weight of the hook (110kg) and the sling, and the outriggers must be supported on flat and solid ground.</li> <li>2. The lifting capacity is determined by the actual load radius.</li> <li>3. When the boom length is between any two boom lengths shown in the diagram, the longer one should be used for lifting.</li> <li>4. When the boom length exceeds 6m, the outriggers must be fully extended.</li> <li>5. This diagram does not include the deflection of the Boom and Fly jib.</li> </ol>					

Lifting Height (m)





whatsapp

Jining Jiaqing Special Vehicle (Group) Co., Ltd.

Add: No. 631, Jiliang Road, Changgou Town, Rencheng district, Jining City, Shandong Province

Tell: +86 185 6172 8600

Web: [www.jiningjiaqing.com](http://www.jiningjiaqing.com)

